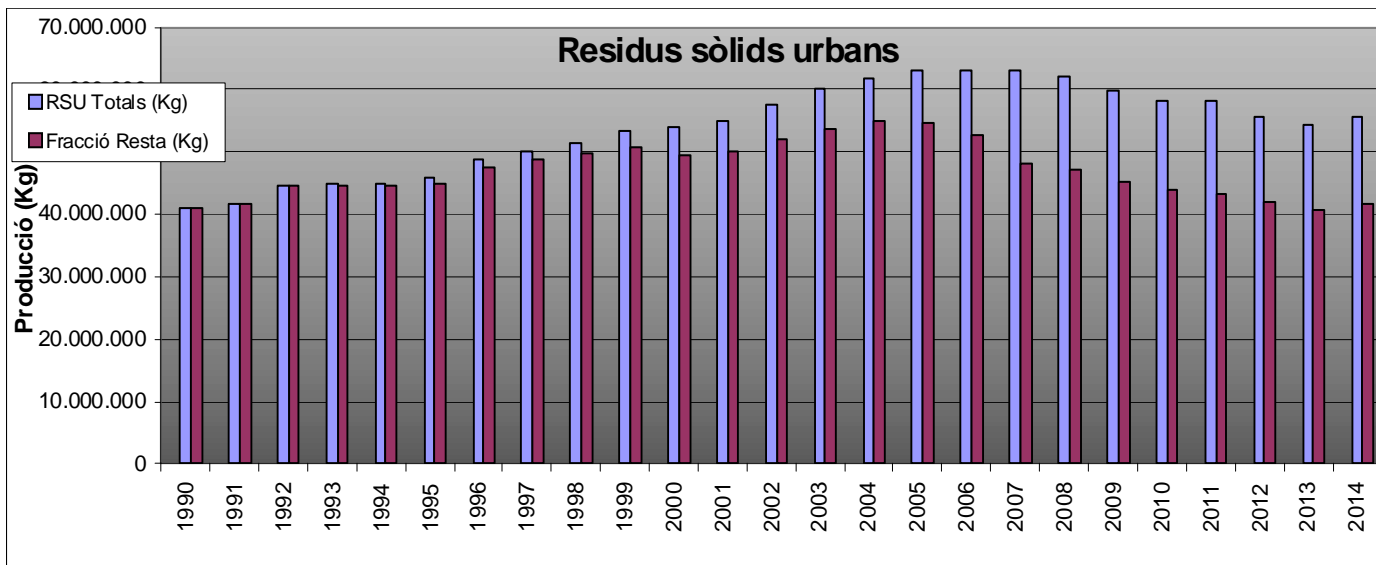




EVOLUCIÓ HISTÒRICA DE LES DADES DE RECOLLIDA DE RESIDUS A LLEIDA (2014)

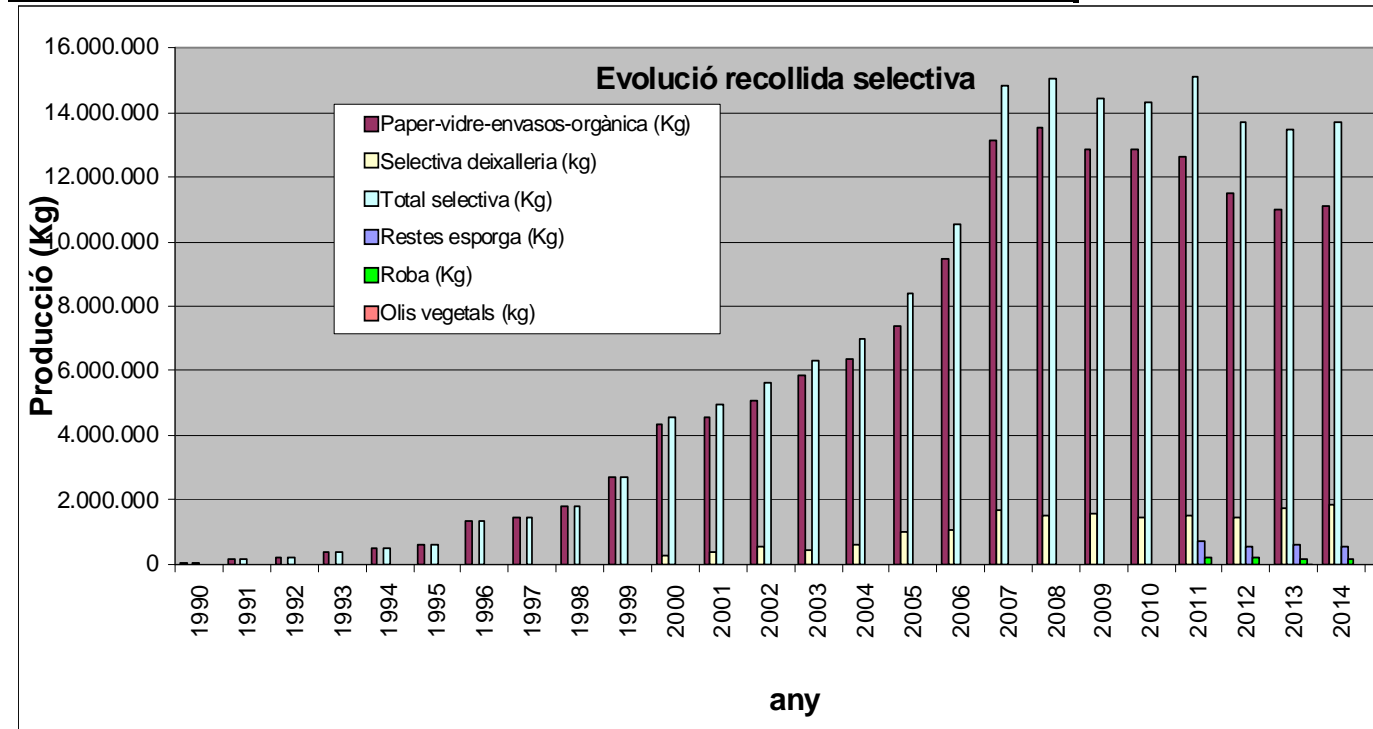
1.- RESIDUS SÒLIDS URBANS (RSU) = FRACCIÓ RESTA + RECOLLIDA SELECTIVA

Any	RSU Totals	Fracció Resta	Paper-vidre- envasos- orgànica	Roba	Restes esporga	Oli vegetal	Selectiva deixalleria	Total selectiva	% Recollida selectiva	kg/ha b/dia	Increment R.S.U Total	Increment Selectiva	Habitants
	(Kg)	(Kg)	(Kg)	(Kg)	(Kg)	(kg)	(Kg)						
1990	41.146.310	41.075.000	71.310				-	71.310	0,17	1,01	-		111.825
1991	41.802.340	41.631.000	171.340				-	171.340	0,41	1,02	1,59	140,27	112.093
1992	44.677.640	44.451.000	226.640				-	226.640	0,51	1,09	6,88	32,28	112.282
1993	45.025.630	44.596.000	429.630				-	429.630	0,95	1,09	0,78	89,56	113.686
1994	45.057.720	44.454.000	603.720				-	603.720	1,34	1,08	0,07	40,52	114.234
1995	45.779.485	44.914.000	865.485				-	865.485	1,89	1,10	1,60	43,36	114.367
1996	48.697.217	47.358.217	1.337.600				-	1.337.600	2,75	1,19	6,37	54,55	112.035
1997	50.144.898	48.677.898	1.467.444				-	1.467.444	2,93	1,22	2,97	9,71	112.841
1998	51.410.757	49.604.757	1.805.990				-	1.805.990	3,51	1,26	2,52	23,07	112.207
1999	53.293.312	50.611.312	2.679.124				-	2.679.124	5,03	1,30	3,66	48,35	112.207
2000	53.912.706	49.337.106	4.323.080				252.520	4.575.600	8,49	1,32	1,16	70,79	112.194
2001	54.914.260	49.916.000	4.603.280				394.980	4.998.260	9,10	1,33	1,86	9,24	113.040
2002	57.573.296	51.964.220	5.068.086				540.990	5.609.076	9,74	1,37	4,84	12,22	115.000
2003	59.987.950	53.686.550	5.845.430				455.970	6.301.400	10,50	1,39	4,19	12,34	118.035
2004	61.838.009	54.862.819	6.374.330				600.860	6.975.190	11,28	1,41	3,08	10,69	119.935
2005	62.991.411	54.612.641	7.354.900				1.023.870	8.378.770	13,30	1,38	1,87	20,12	124.709
2006	63.121.164	52.574.050	9.493.424				1.053.690	10.547.114	16,71	1,38	0,21	25,88	125.677
2007	63.035.656	48.197.610	13.146.396				1.691.650	14.838.046	23,54	1,36	-0,14	40,68	127.314
2008	62.144.165	47.074.000	13.532.875				1.537.290	15.070.165	24,25	1,29	-1,41	1,56	131.731
2009	59.719.164	45.287.706	12.865.858				1.565.600	14.431.458	24,17	1,20	-3,90	-4,24	135.919
2010	58.278.040	43.942.220	12.883.610				1.452.210	14.335.820	24,60	1,16	-2,41	-0,66	137.387
2011	58.314.004	43.218.465	12.612.040	242.149	707.140		1.534.210	15.095.539	25,89	1,15	0,06	5,30	138.416
2012	55.571.308	41.844.491	11.523.620	188.962	575.605		1.438.630	13.726.817	24,70	1,09	-4,70	-9,07	139.834
2013	54.186.095	40.715.710	11.006.840	152.114	579.850	16.311	1.715.270	13.470.385	24,86	1,06	-2,49	-1,87	139.809
2014	55.477.141	41.780.650	11.115.040	170.682	542.486	14.173	1.854.110	13.696.491	24,69	1,09	2,38	1,68	139.176

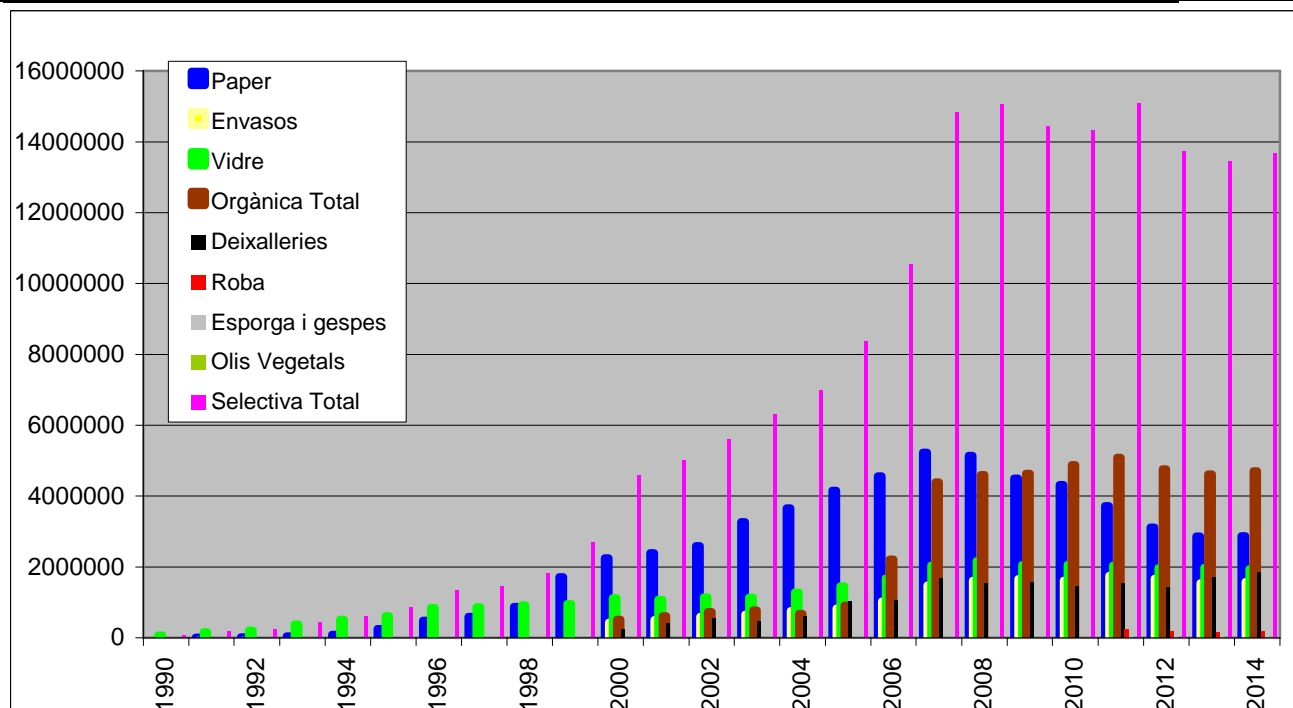


2.- EVOLUCIÓ DE LA RECOLLIDA DE CADA UNA DE LES FRACCIONS DE RECOLLIDA SELECTIVA.

Any	Paper-vidre- envasos- orgànica (Kg)	Roba (Kg)	Restes esporga (Kg)	Olis vegetals (kg)	Selectiva deixalleria (kg)	Total selectiva (Kg)
1990	71.310				-	71.310
1991	162.660				-	162.660
1992	209.275				-	209.275
1993	380.935				-	380.935
1994	514.616				-	514.616
1995	616.000				-	616.000
1996	1.339.000				-	1.339.000
1997	1.467.000				-	1.467.000
1998	1.806.000				-	1.806.000
1999	2.682.000				-	2.682.000
2000	4.332.000				252.520	4.584.520
2001	4.574.000				394.980	4.968.980
2002	5.075.000				540.990	5.615.990
2003	5.845.430				455.970	6.301.400
2004	6.374.330				600.860	6.975.190
2005	7.354.900				1.023.870	8.378.770
2006	9.493.424				1.053.690	10.547.114
2007	13.116.316				1.691.650	14.807.966
2008	13.532.875				1.537.290	15.070.165
2009	12.865.858				1.565.600	14.431.458
2010	12.883.610				1.452.210	14.335.820
2011	12.612.040	242.149	707.140		1.534.210	15.095.539
2012	11.523.620	188.962	575.605		1.438.630	13.726.817
2013	11.006.840	152.114	579.850	16.311	1.721.258	13.476.373
2014	11.115.040	170.682	542.486	14.173	1.854.110	13.696.491

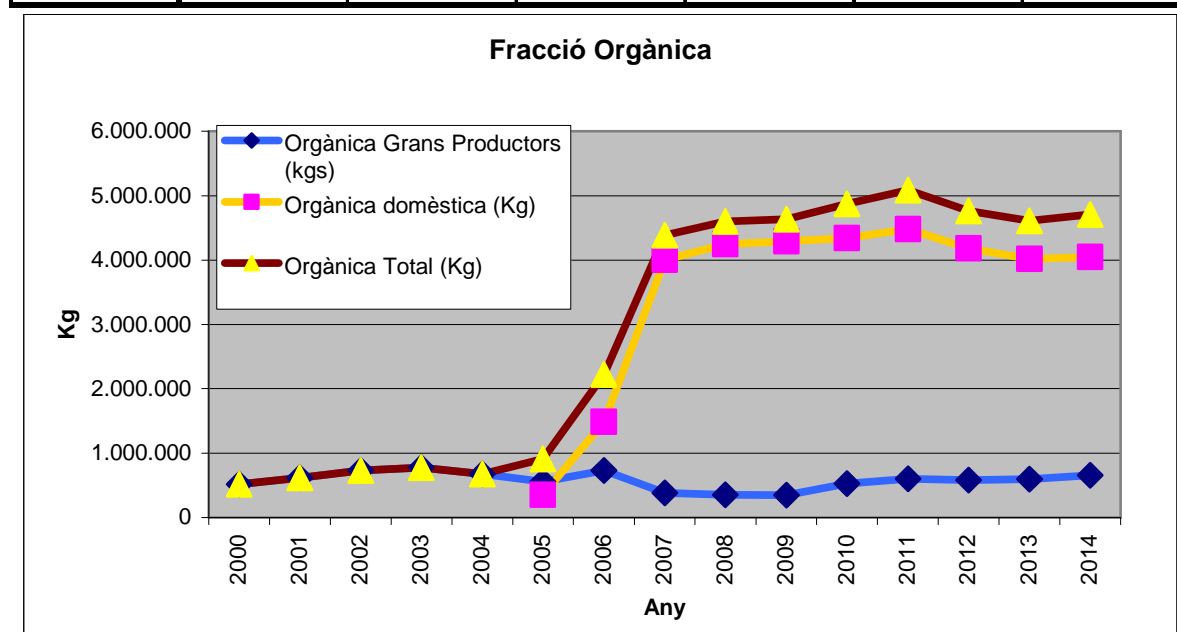


Any	Paper	Envasos	Vidre	Orgànica Total	Deixalleries	Roba	Esporga i gespes	Olis Vegetals	Selectiva Total	Increment Selectiva
1990			71310						71.310	
1991	8.680		162.660						171.340	140,27
1992	17.365		209.275						226.640	32,28
1993	48.695		380.935						429.630	89,56
1994	89.550		514.170						603.720	40,52
1995	249.485		616.000						865.485	43,36
1996	487.060		850.540						1.337.600	54,55
1997	599.600		867.844						1.467.444	9,71
1998	881.570		924.420						1.805.990	23,07
1999	1.717.994		961.130						2.679.124	48,35
2000	2.249.990	433.010	1.122.140	517.940	252.520				4.575.600	70,79
2001	2.398.170	510.510	1.075.120	619.480	394.980				4.998.260	9,24
2002	2.589.850	600.876	1.146.710	730.650	540.990				5.609.076	12,22
2003	3.270.555	657.235	1.141.620	776.020	455.970				6.301.400	12,34
2004	3.652.160	761.040	1.284.160	676.970	600.860				6.975.190	10,69
2005	4.154.170	828.390	1.461.480	910.860	1.023.870				8.378.770	20,12
2006	4.565.330	1.027.200	1.679.640	2.221.254	1.053.690				10.547.114	25,88
2007	5.231.595	1.480.340	2.046.760	4.387.701	1.691.650				14.838.046	40,68
2008	5.140.325	1.616.540	2.174.710	4.601.300	1.537.290				15.070.165	1,56
2009	4.498.400	1.664.470	2.066.360	4.636.628	1.565.600				14.431.458	-4,24
2010	4.321.200	1.622.820	2.065.410	4.874.180	1.452.210				14.335.820	-0,66
2011	3.718.880	1.757.580	2.048.620	5.086.960	1.534.210	242.149	707.140		15.095.539	5,30
2012	3.117.340	1.669.780	1.972.840	4.763.660	1.438.630	188.962	575.605		13.726.817	-9,07
2013	2.863.710	1.547.340	1.982.560	4.613.230	1.715.270	152.114	579.850	16.311	13.470.385	-1,87
2014	2.871.270	1.587.940	1.947.850	4.707.980	1.854.110	170.682	542.486	14.173	13.696.491	1,68



3.- MATÈRIA ORGÀNICA

	Orgànica Grans Productors (kgs)	Orgànica domèstica (Kg)	Orgànica Total (Kg)	Habitants	Kg/hab/any	Increment anual (%)
2000	517.940		517.940	112.194	4,62	
2001	619.480		619.480	113.040	5,48	18,71
2002	730.650		730.650	115.000	6,35	15,94
2003	776.020		776.020	118.035	6,57	3,48
2004	676.970		676.970	118.035	5,74	-12,76
2005	555.295	355.565	910.860	124.709	7,30	27,35
2006	733.087	1.488.167	2.221.254	125.677	17,67	141,99
2007	385.191	4.002.510	4.387.701	127.314	34,46	94,99
2008	353.280	4.248.020	4.601.300	131.731	34,93	1,35
2009	346.170	4.290.458	4.636.628	135.919	34,11	-2,34
2010	529.960	4.344.220	4.874.180	137.387	35,48	4,00
2011	604.210	4.482.750	5.086.960	138.416	36,75	3,59
2012	581.720	4.181.940	4.763.660	139.834	34,07	-7,31
2013	596.300	4.016.930	4.613.230	139.809	33,00	-3,14
2014	657.940	4.050.040	4.707.980	139.176	33,83	2,52

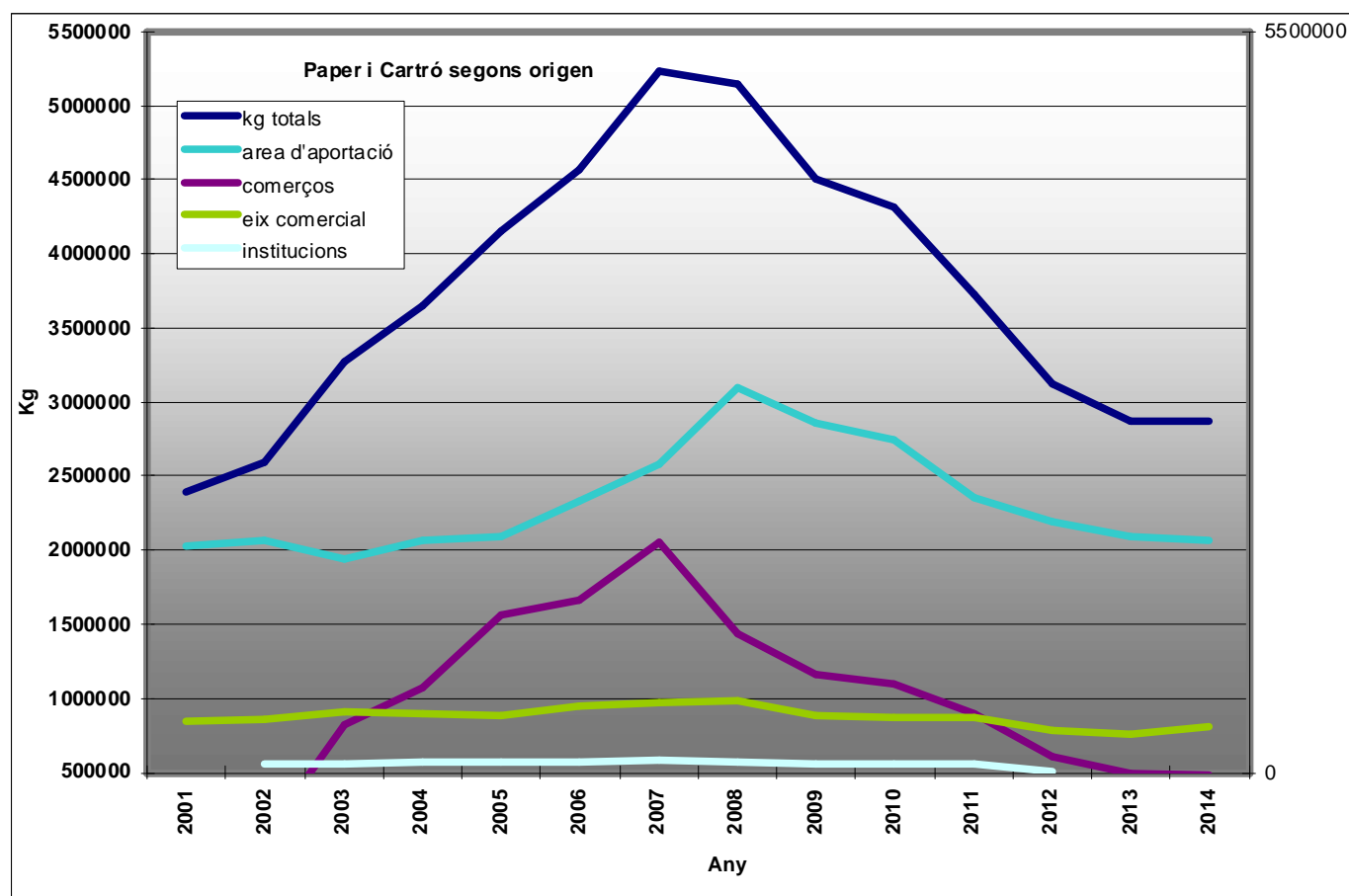




4.- PAPER I CARTRÓ

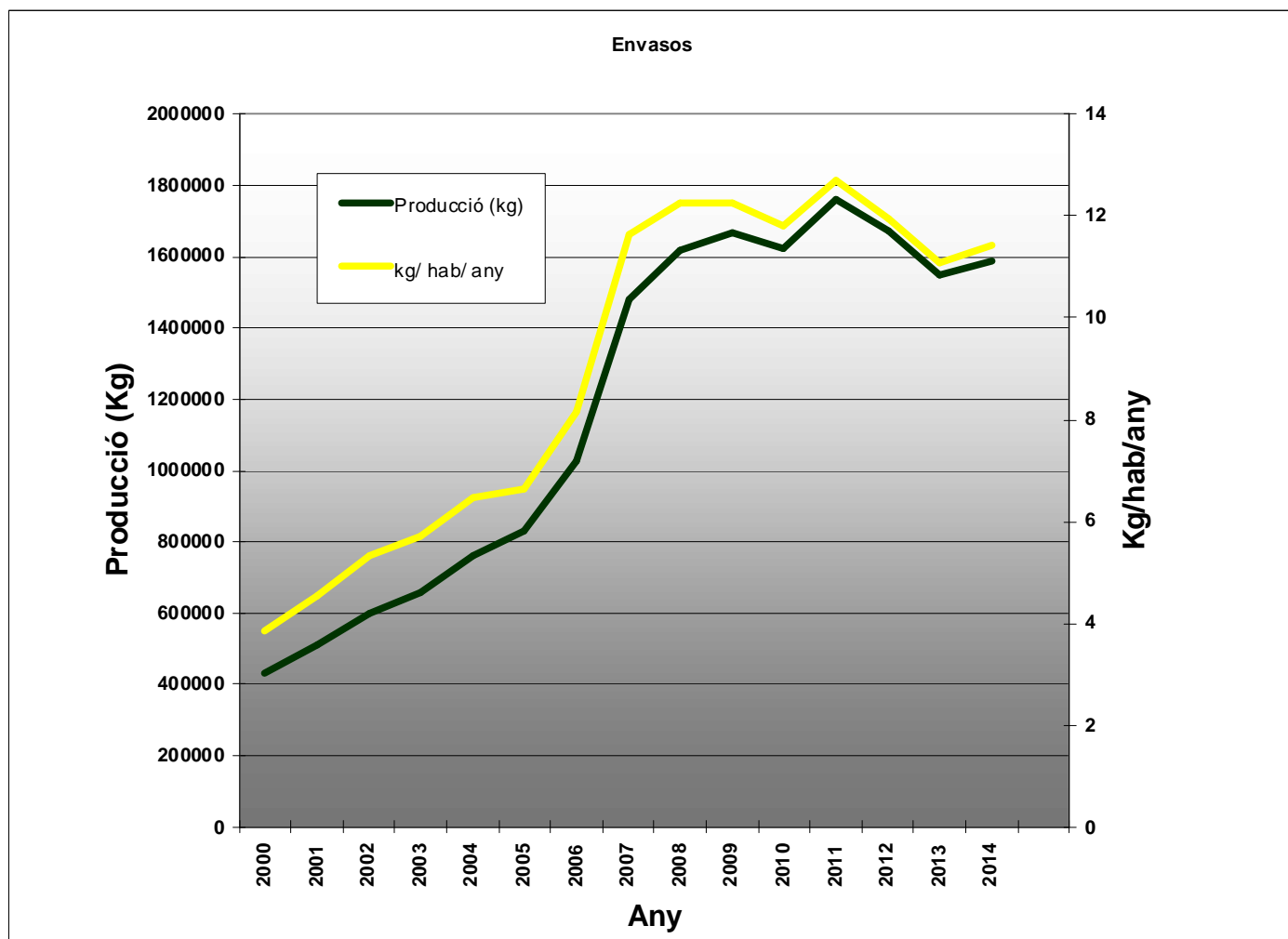
Anys	Paper i cartró	Habitants	kg/hab/ any	Increment
1991	8.680	112.093	0,08	
1992	17.365	112.282	0,15	100,06
1993	48.695	113.686	0,43	180,42
1994	89.550	114.234	0,78	83,90
1995	249.485	114.367	2,18	178,60
1996	487.060	112.035	4,35	95,23
1997	599.600	112.841	5,31	23,11
1998	881.570	112.207	7,86	47,03
1999	1.717.994	112.207	15,34	94,88
2000	2.249.990	112.194	20,05	30,97
2001	2.398.170	113.040	21,22	6,59
2002	2.589.850	115.000	22,52	7,99
2003	3.270.555	118.035	27,71	26,28
2004	3.652.160	118.035	30,94	11,67
2005	4.154.170	124.709	33,31	13,75
2006	4.565.330	125.677	36,33	9,90
2007	5.231.595	127.314	41,09	14,59
2008	5.140.325	131.731	39,02	-1,74
2009	4.498.400	135.919	33,10	-12,49
2010	4.321.200	137.387	31,45	-3,94
2011	3.718.880	138.416	26,87	-13,94
2012	3.117.340	139.834	22,29	-16,18
2013	2.863.710	139.809	20,48	-8,14
2014	2.871.270	139.176	20,63	0,26

	<u>Kg totals</u>	<u>Àrea d'aportació (kg)</u>	<u>Comerços (kg)</u>	<u>Eix comercial (kg)</u>	<u>Total comercial</u>	<u>Increment comercial</u>	<u>Institucions (kg)</u>
2001	2.398.170	2.022.370	0	375.800			
2002	2.589.850	2.068.450	63.230	389.990	453.220		68.180
2003	3.270.555	1.939.510	820.314	442.260	1.262.574	178,58	68.471
2004	3.652.160	2.064.830	1.076.340	438.360	1.514.700	19,97	72.630
2005	4.154.170	2.088.530	1.562.150	428.190	1.990.340	31,40	75.300
2006	4.565.330	2.327.430	1.662.750	494.790	2.157.540	8,40	80.360
2007	5.231.595	2.584.450	2.049.090	512.730	2.561.820	18,74	85.325
2008	5.140.325	3.095.580	1.434.940	537.565	1.972.505	-23,00	72.240
2009	4.498.400	2.857.140	1.155.930	422.680	1.578.610	-19,97	62.650
2010	4.321.200	2.747.410	1.098.760	413.830	1.512.590	-4,18	61.200
2011	3.718.880	2.354.320	893.160	407.370	1.300.530	-14,02	64.030
2012	3.117.340	2.188.090	603.080	316.460	919.540	-29,29	9.710
2013	2.863.710	2.089.550	495.080	279.080	774.160	-15,81	
2014	2.871.270	2.062.340	475.690	333.240	808.930	4,49	



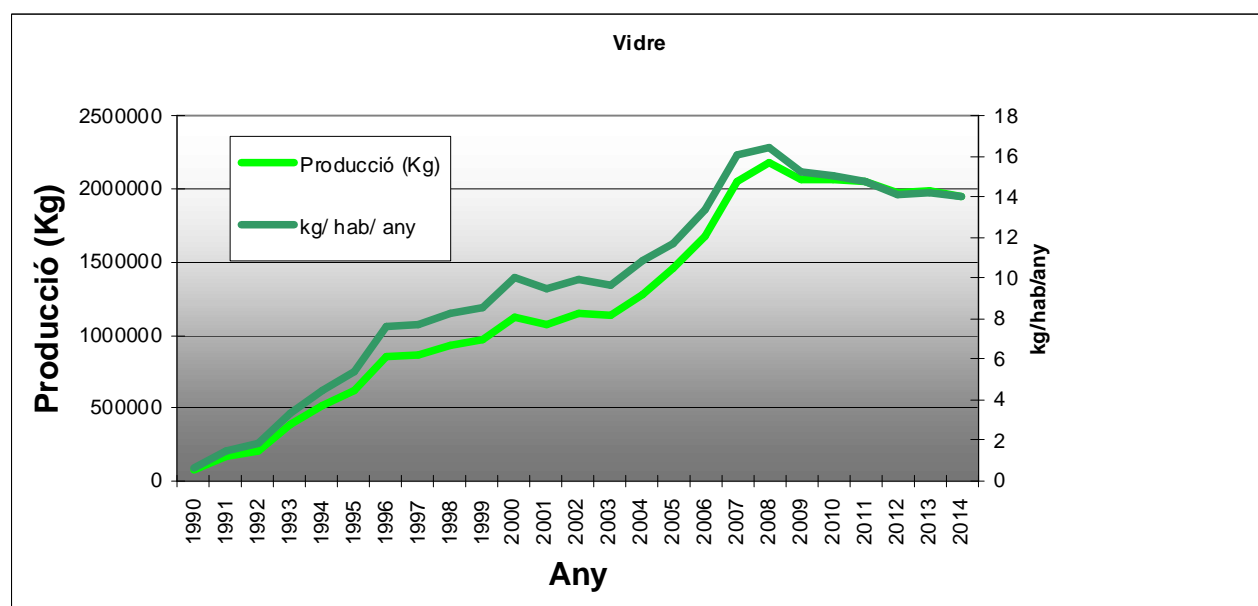
5.- ENVASOS

Any	Envasos (kg)	Habitants	Kg/hab/any	Increment anual (%)
2000	433.010	112.194	3,86	-
2001	510.510	113.040	4,55	17,90
2002	600.876	115.000	5,32	17,70
2003	657.235	118.035	5,72	9,38
2004	761.040	118.035	6,45	15,79
2005	828.390	124.709	6,64	8,85
2006	1.027.200	125.677	8,17	24,00
2007	1.480.340	127.314	11,62	44,11
2008	1.616.540	131.731	12,27	9,20
2009	1.664.470	135.919	12,24	2,96
2010	1.622.820	137.387	11,81	-2,50
2011	1.757.580	138.416	12,70	8,30
2012	1.669.780	139.834	11,94	-5,00
2013	1.547.340	139.809	11,07	-7,33
2014	1.587.940	139.176	11,41	2,62



6.- VIDRE

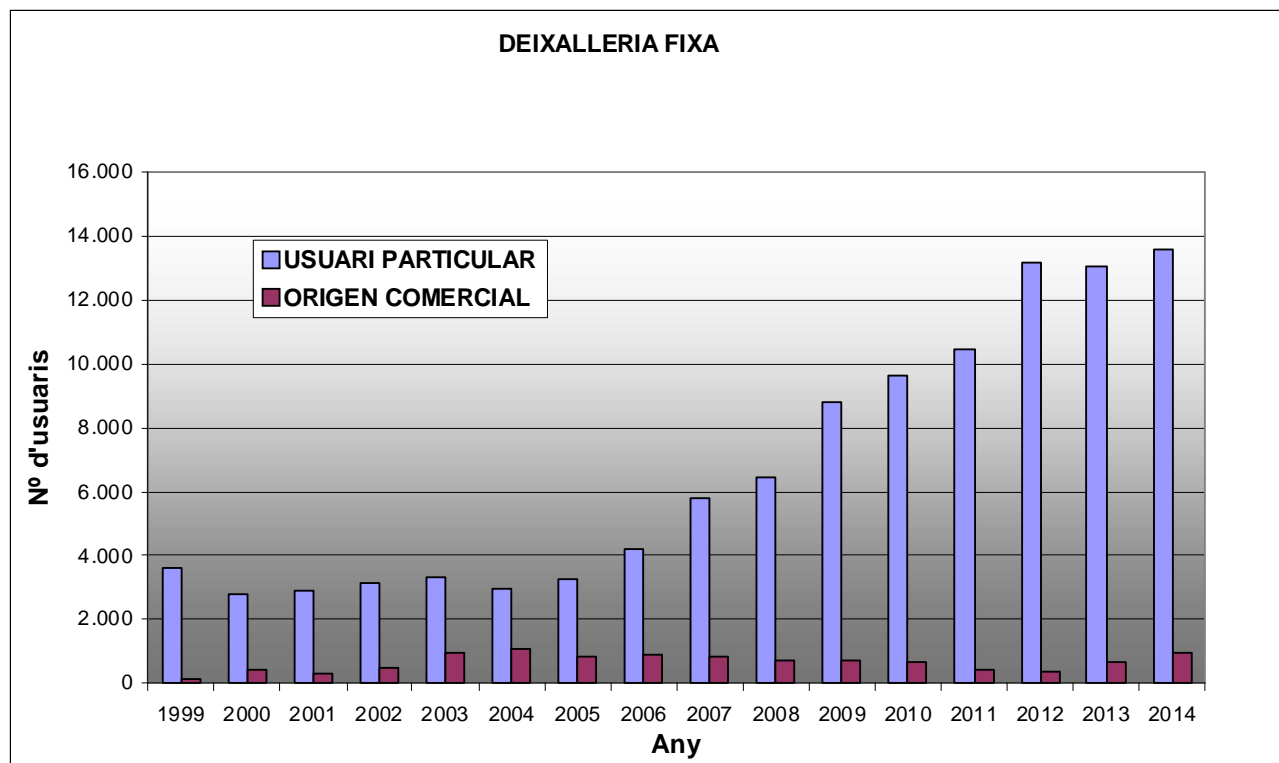
	Vidre (kg)	Habitants	Kg/hab/anys	Increment (%)
1990	71.310	111.825	0,64	-
1991	162.660	112.093	1,45	128,10
1992	209.275	112.282	1,86	28,66
1993	380.935	113.686	3,35	82,03
1994	514.170	114.234	4,50	34,98
1995	616.000	114.367	5,39	19,80
1996	850.540	112.035	7,59	38,07
1997	867.844	112.841	7,69	2,03
1998	924.420	112.207	8,24	6,52
1999	961.130	112.207	8,57	3,97
2000	1.122.140	112.194	10,00	16,75
2001	1.075.120	113.040	9,51	-4,19
2002	1.146.710	115.000	9,97	6,66
2003	1.141.620	118.035	9,67	-0,44
2004	1.284.160	118.035	10,88	12,49
2005	1.461.480	124.709	11,72	13,81
2006	1.679.640	125.677	13,36	14,93
2007	2.046.760	127.314	16,08	21,86
2008	2.174.710	131.731	16,51	6,25
2009	2.066.360	135.919	15,20	-4,98
2010	2.065.410	137.387	15,03	-0,05
2011	2.048.620	138.416	14,80	-0,81
2012	1.972.840	139.834	14,11	-3,70
2013	1.982.560	139.809	14,18	0,49
2014	1.947.850	139.176	14,00	-1,75



7.- DEIXALLERIES MUNICIPALS, RECOLLIDA VOLUMINOSOS I SERVEIS NO CONCERTATS DE RECOLLIDA.

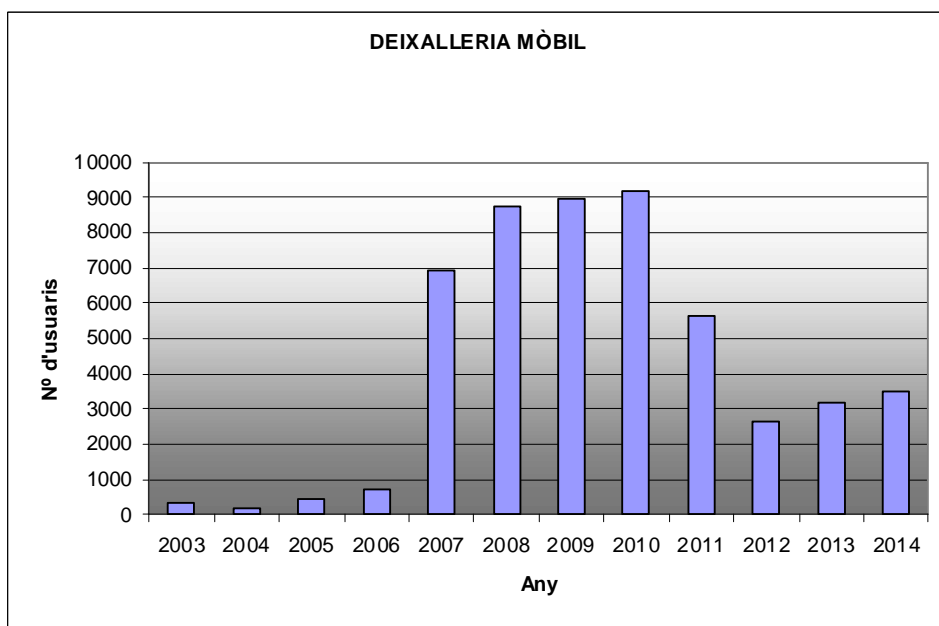
7.1. DEIXALLERIA FIXA

Any	Usuari particular	Origen comercial	TOTAL	INCREMENT
1999	3.605	122	3.727	
2000	2.784	413	3.197	-14,22
2001	2.895	278	3.173	-0,75
2002	3.115	496	3.611	13,80
2003	3.330	964	4.294	18,91
2004	2.986	1.061	4.047	-5,75
2005	3.234	826	4.060	0,32
2006	4.221	873	5.094	25,47
2007	5.779	811	6.590	29,37
2008	6.452	703	7.155	8,57
2009	8.821	724	9.545	33,40
2010	9.655	660	10.315	8,07
2011	10.463	411	10.874	5,42
2012	13.153	386	13.539	24,51
2013	13.066	680	13.746	1,53
2014	13.600	970	14.570	5,99



7.2. DEIXALLERIA MÒBIL.

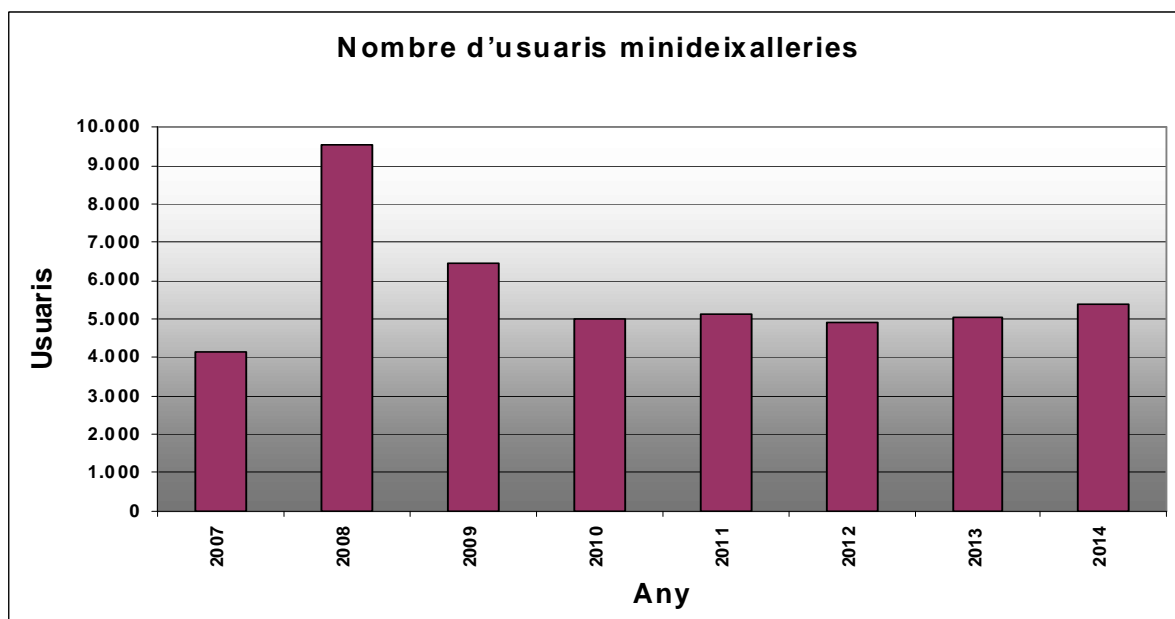
Any	Nombre d'entrades	Increment
2003	344	
2004	181	-47,38
2005	456	151,93
2006	722	58,33
2007	6.947	862,19
2008	8.749	25,94
2009	8.950	2,30
2010	9.171	2,47
2011	5.635	-38,56
2012	2.631	-53,31
2013	3.164	20,26
2014	3.510	10,94





7.3. MINIDEIXALLERIES

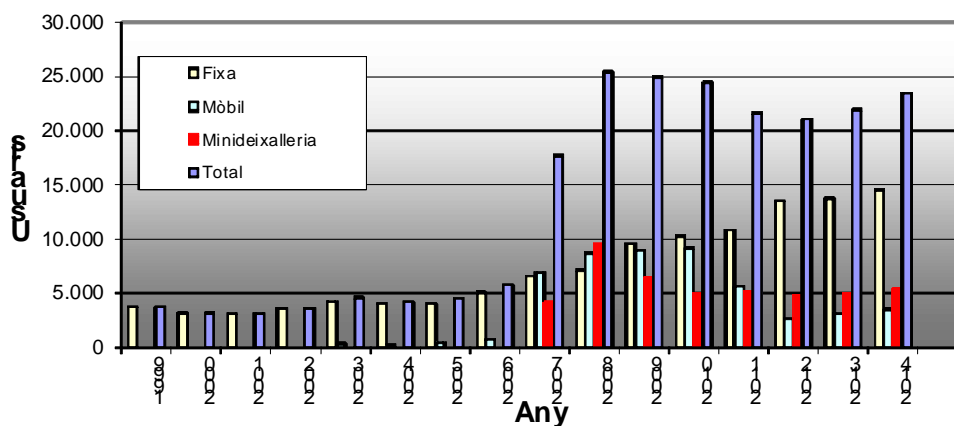
Any	Nombre d'entrades	Increment
2007	4.155	
2008	9.522	129,17
2009	6.448	-32,28
2010	4.977	-22,81
2011	5.139	3,25
2012	4.902	-4,61
2013	5.030	2,61
2014	5.397	7,30



7.4.TOTAL ENTRADES AL SERVEI DE DEIXALLERIES

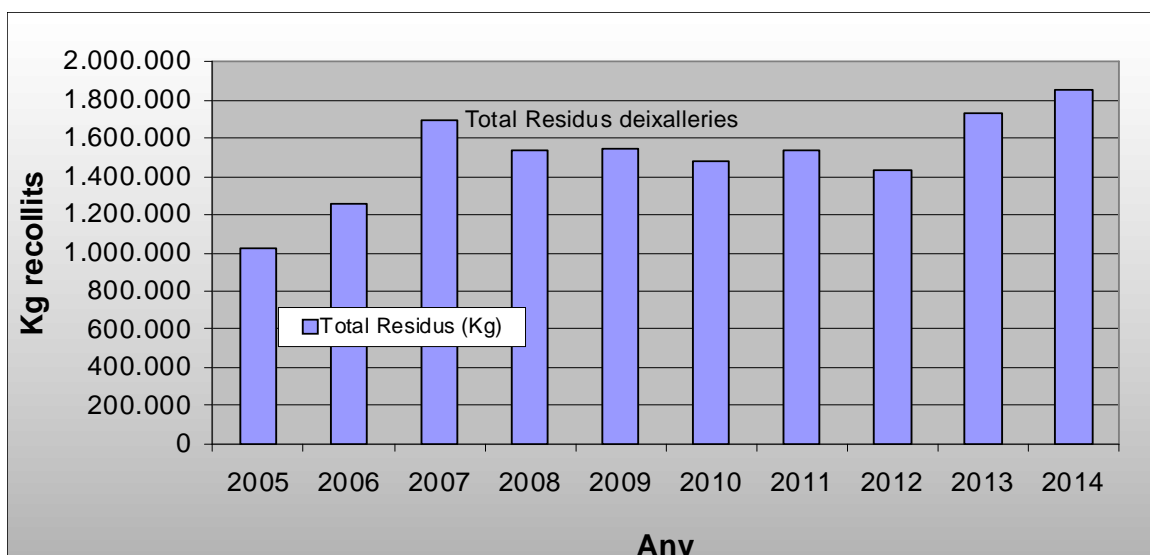
Any	Fixa	Mòbil	Minideixalleria	Total	% Increment
1999	3.727			3.727	
2000	3.197			3.197	-14,22
2001	3.173			3.173	-0,75
2002	3.611			3.611	13,80
2003	4.294	344		4.638	28,44
2004	4.047	181		4.228	-8,84
2005	4.060	456		4.516	6,81
2006	5.094	722		5.816	28,79
2007	6.590	6.947	4.155	17.692	204,20
2008	7.155	8.749	9.522	25.426	43,71
2009	9.545	8.950	6.448	24.943	-1,90
2010	10.315	9.171	4.977	24.463	-1,92
2011	10.874	5.635	5.139	21.648	-11,51
2012	13.539	2.631	4.902	21.072	-2,66
2013	13.746	3.164	5.030	21.940	4,12
2014	14.570	3.510	5.397	23.477	7,01

evolució usuaris deixalleries (1999-2014)



7.5.- DADES RECOLLIDA RESIDUS A LES DEIXALLERIES.

	Total Residus (Kg)	% increment
2005	1.023.870	0
2006	1.253.690	22,45
2007	1.691.650	34,93
2008	1.536.500	-9,17
2009	1.546.260	0,64
2010	1.483.870	-4,03
2011	1.534.210	3,39
2012	1.435.490	-6,43
2013	1.731.180	20,60
2014	1.854.110	7,10



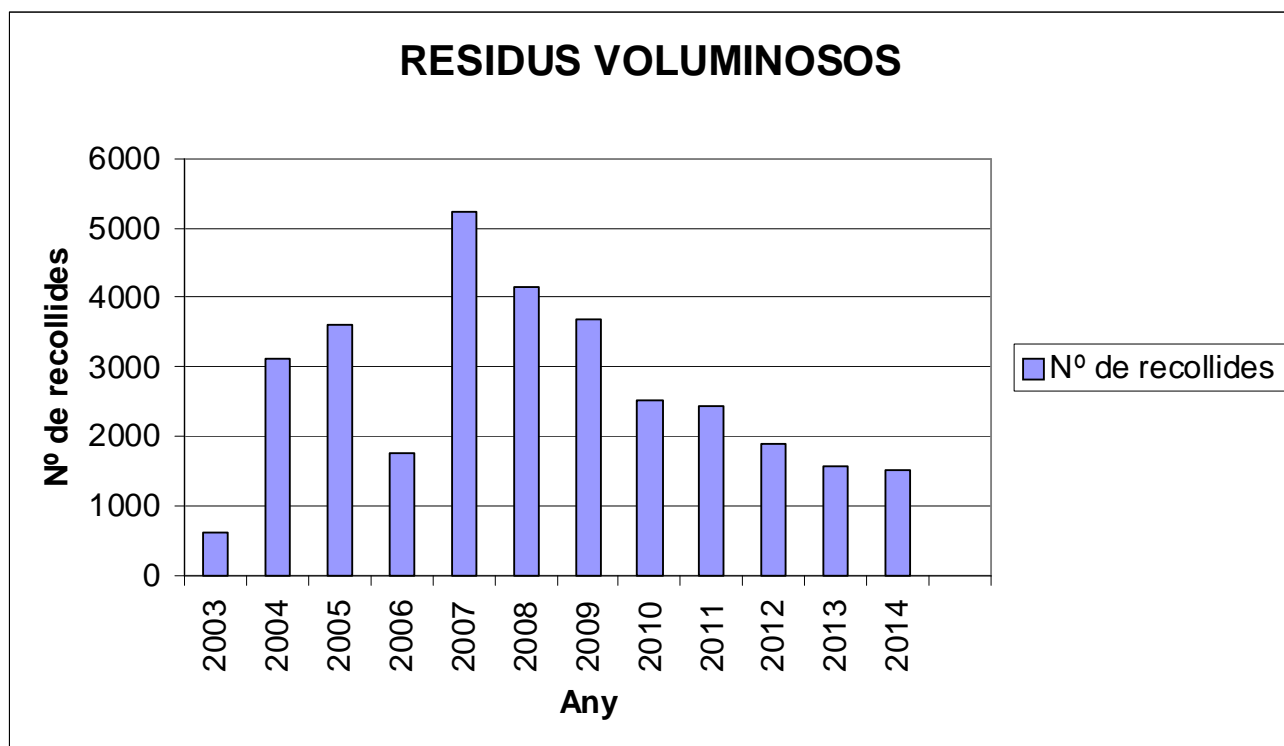


Nombre d'USUARIS	25.426	24.943	24.463	21.648	21.072	21.940	23.077
ELECTRODOMÈSTICS AMB CFC (A1)	7,81	12,51	5,46	13,32	11,03	7,11	9,10
FUSTES i VOLUMINOSOS	1.086,14	1.021,27	949,22	968,22	867,52	917,48	864,82
VIDRE PLÀ	17,40	13,50	26,12	13,44	12,46	18,88	30,66
PILES	4,65	4,86	3,10	4,98	1,72	2,68	2,81
FLUORESCENTS (A5)	2,19	1,79	2,19	1,30	1,33	1,16	1,38
OLIS VEGETALS	8,29	9,13	8,28	9,08	9,95		
RAEE (aparells elèctrics i electrònics)	124,79	124,58	153,06	138,66	114,91	118,76	124,00
PNEUMÀTIC	3,53	9,52	0,00	2,28	2,52	3,03	4,51
FERRALLA	82,89	95,95	82,65	67,25	46,17	47,91	51,24
MEDICAMENTS I RADIOGRAFIES	0,24	1,93	1,35	1,43	0,73	0,41	0,67
OLI MINERAL	2,20	4,60	4,20	3,20	3,5	3,70	3,50
ROBA	12,35	9,94	10,08	8,62	8,3		
RUNES	165,71	217,36	223,02	285,10	340,64	573,78	746,08
TONER	1,52	1,39	1,33	0,95	1,2	1,43	1,60
ÀCIDS	0,00	0,14	0,06	0,22	0,01	0,06	0,00
DISSOLVENTS	0,75	1,18	1,60	0,88	0,84	0,33	0,47
AEROSOLS	0,83	0,69	0,78	0,49	0,3	0,48	0,36
BATERIES	4,10	6,22	0,00	6,14	6,945	7,86	5,63
FILTRES OLI	0,08	0,19	0,12	0,14	0,12	0,13	0,08
PINTURES i ALTRES	11,03	9,51	11,25	8,51	8,44	10,09	7,20
TOTAL RESIDUS (Tm)	1.536,50	1.546,26	1.483,87	1.534,21	1.438,63	1.715,27	1.854,11

Les dades de la recollida d'oli vegetal (4,9t) i roba (8,6t) procedent de la deixalleria no es computen al total de residus recollits a la deixalleria atès que estan comptabilitzades al total de residus de la recollida selectiva especificats en el punt 1 d'aquest resum.

9.1. RECOLLIDA RESIDUS VOLUMINOSOS. SERVEIS CONCERTATS

Any	Serveis	increment
2003	624	
2004	3.120	400,00
2005	3.600	15,38
2006	1.760	-51,11
2007	5.245	198,01
2008	4.153	-20,82
2009	3.673	-11,56
2010	2.510	-31,66
2011	2.442	-2,71
2012	1.903	-22,07
2013	1.568	-17,60
2014	1.505	-4,02



9.2. RECOLLIDA RESIDUS VOLUMINOSOS. SERVEIS NO CONCERTATS

Any	Serveis	increment
2003	1.264	
2004	1.974	56,17
2005	3.242	64,24
2006	16.809	418,48
2007	16.809	0,00
2008	16.228	-3,46
2009	12.846	-20,84
2010	14.668	14,18
2011	16.371	11,61
2012	16.855	2,96
2013	16.887	0,19
2014	18.962	12,29

